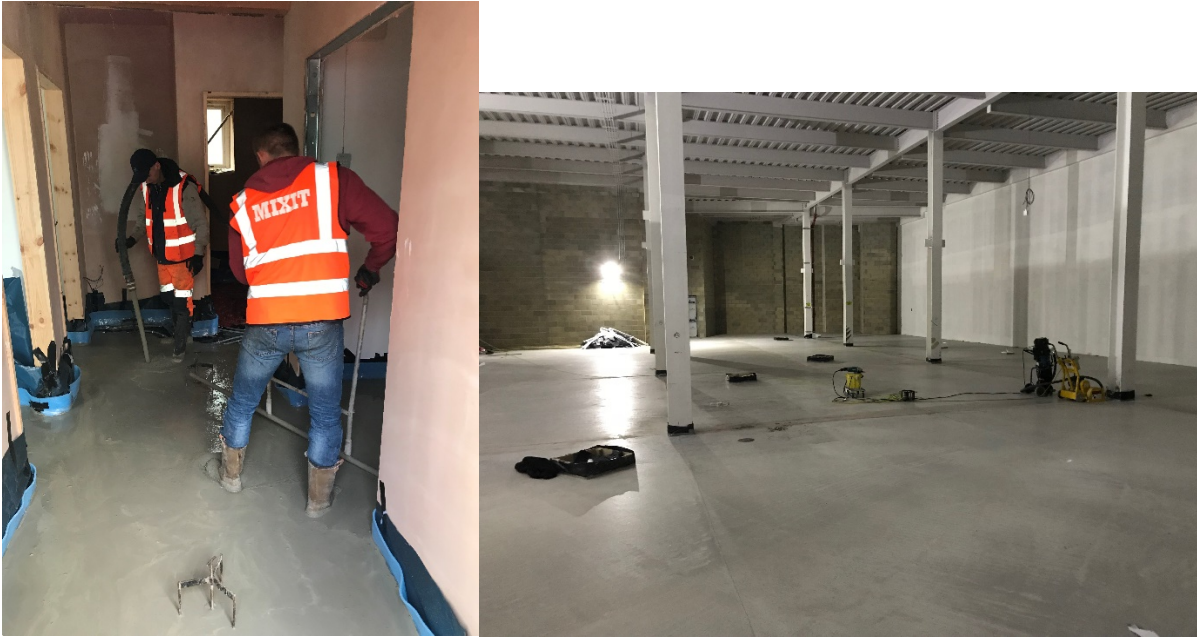


## MIXIT-FLO – liquid cement screed

### Flowable Liquid Screed Solutions:

MIXIT-FLO is a formulated limestone binder with selected additives which is mixed with cement, sand and water to produce a free-flowing cementitious floor screed.

MIXIT-FLO is suitable for commercial and domestic applications. Screed installation applications include floating screed over thermal and acoustic insulation, unbonded on a 1200g membrane or bonded to subfloor. MIXIT-FLO is compatible with all floor coverings, adhesives and primers.



Free-flowing screed is very responsive to underfloor heating; with a thermal conductivity 1.9-2.6W/m.K. Flexural strengths  $\geq 5\text{N/mm}^2$  allow for thinner thicknesses when compared to traditional semi-dry screeds. Free-flowing screed fully encapsulates underfloor heating pipes resulting in uniform heat transfer / room temperature.

## Dappling

To achieve a smooth finish after levelling use a T-bar to dapple the screed in two passes to produce a smooth surface finish. The first pass should be heavy enough to create a small wave and remove any bubbles in the screed. The second is a light dapple pass across the surface, perpendicular (90 degrees) from the first pass to achieve final finish.

*Video of Progressive Dappling screed (file to large to email)*

## Curing

Immediately after the surface has been finished by dappling, the Longcure curing agent is applied. The recommended rate is 1L per 5-6m<sup>2</sup> using suitable equipment. A surface treated with the curing agent is initially white in order to easily identify the coated areas. After drying the coating is transparent.



## Key Benefits of MIXIT FLO screed

- Drying times – MIXIT FLO is suitable to receive non-moisture sensitive floor finishes between 7-14 days. Underfloor heating can be commissioned after 10 days to force dry / speed up drying time. For non-heated floors Ideal drying conditions (20°C/65%RH) ensures screed is dry in 21 days. A hygrometer can check moisture is below 0.5% prior to installing moisture sensitive floor finishes.
- Superior flexural & compressive strengths (C25/F5); MIXIT FLO can be installed thinner than semi-dry screeds. 30mm cover to underfloor heating pipes
- No reinforcement required. Traditional semi-dry screeds require D49 & 65mm thickness (domestic)
- Free-flowing screed fully encapsulates heating pipes resulting in uniform heat transfer
- Excellent thermal conductivity (up to 2.6W/m.K) - faster room heating and cooling
- Lower running costs for underfloor heating systems when using MIXIT FLO
- MIXIT FLO is pump applied directly to floor. Up to 1500m<sup>2</sup> can easily be installed in 1 day
- Large floor areas without joints -150m<sup>2</sup> and 100m<sup>2</sup> for underfloor heating bays

- If originally planning to use semi-dry screeds, MIXIT-FLO can be installed thinner; thermal insulation thickness can be increased improving ground floor U-values. Alternatively, higher ceilings are possible.
- MIXIT FLO easily achieves an SR2 finish (BS 8204)
- Minimal shrinkage <math><500\mu\text{m}/\text{m}</math>
- Foot traffic between 24 – 36 hours
- MIXIT FLO is compatible with all types of primers, grouts and adhesives.
- No sanding is required. Light abrasion may be necessary by final floor applicator in line with association guidelines for certain floor finishes
- Health and Safety benefits – MIXIT FLO is ergonomically easier to install versus traditional semi-dry screeds
- Environmental credentials – Longfloor binder contains 95% recycled content as verified under EN ISO 14021.
- Quality Control – MIXIT FLO produced from third party BSI accredited plants.